

SPECIFICATION FOR A Plastic Pellet 5820 CU.FT. COVERED HOPPER CAR

This Specification a 100 ton 5820 cu.ft. capacity steel covered hopper car with ten 20" diameter roof hatches and four vacuum pneumatic discharge bottom outlets.

Weight and Capacity

Classification:	AAR Class LO
Capacity: Total	5820 cu. ft. (165 m3)
End Hopper	1579 cu. ft. (44.7 m3)
Intermediate Hopper	1332 cu. ft. (37.7 m3)
Permissible Rail Load:	263,000 pounds (119 300 kg)
Lightweight: (est.)	70,000 pounds (31 750 kg)
Load Limit:	193,000 pounds (87 550 kg)
Clearance Diagram:	A.A.R. plate "C"
Curve negotiability (Horizontal)	253 foot radius and No. 7 crossover

Dimensions:

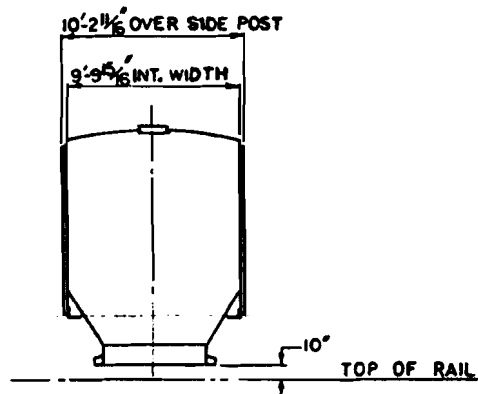
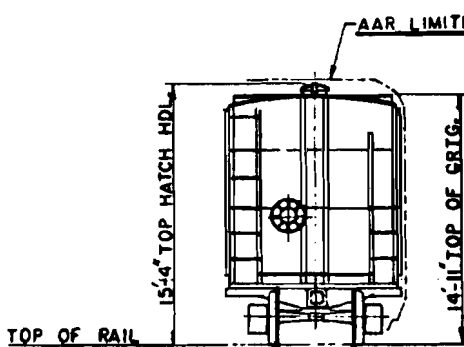
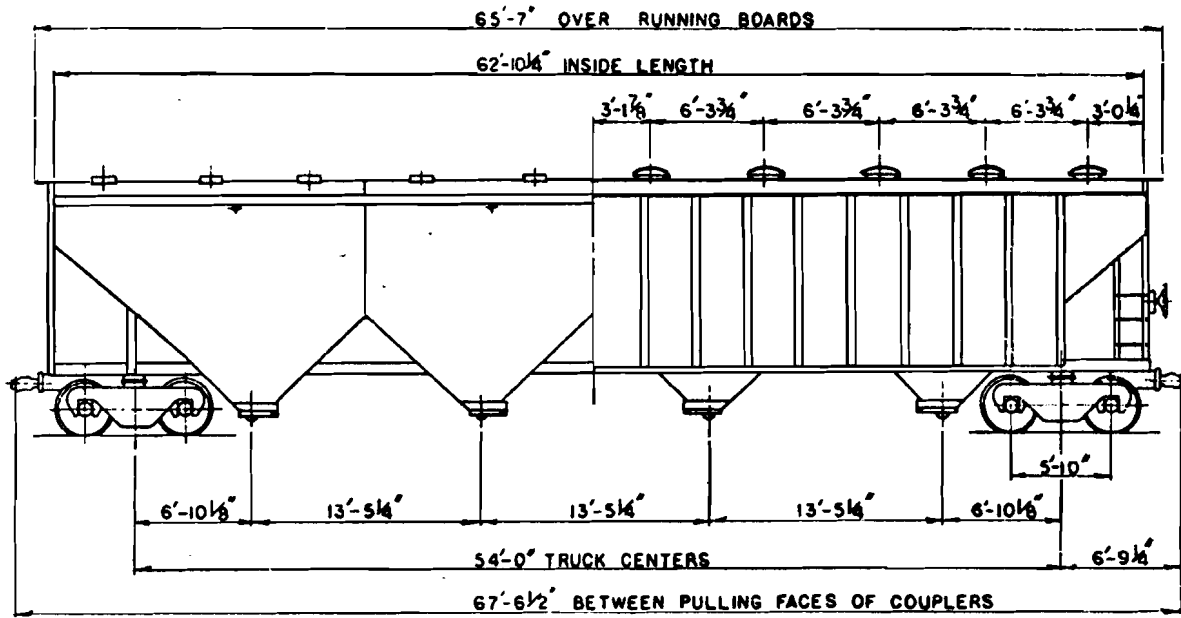
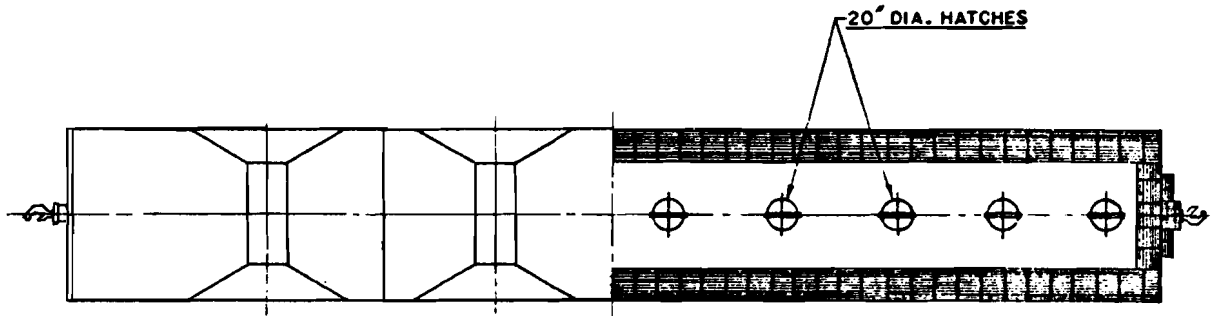
Length over coupler pulling faces:	67' - 6-1/2"
Width extreme:	10' - 2-11/16"
Height extreme:	15' - 6"
Length over truck centres:	54' - 0"
Height from rail to top of running boards:	14' - 11"
Rail clearance to bottom of outlet:	0' - 10"
Slope of valley:	40 degrees

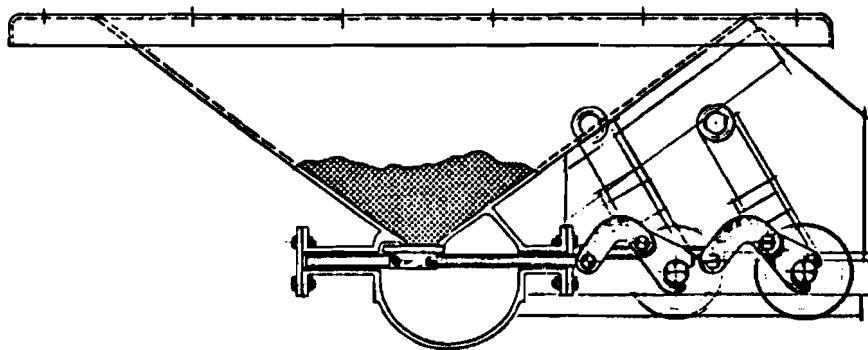
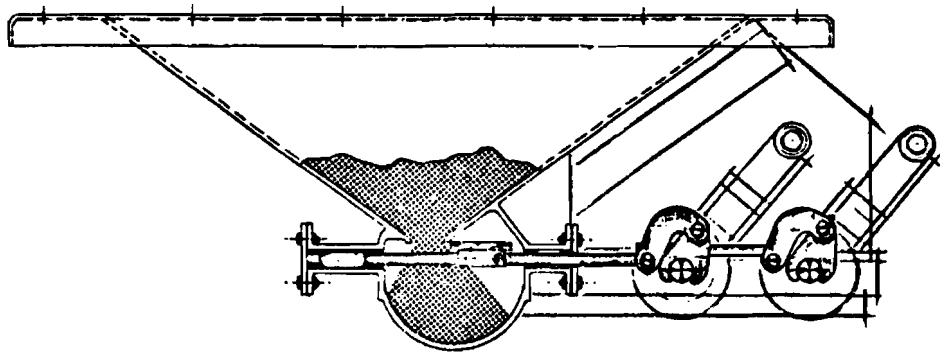
Drawings

Sheet No. 121	5820 cu.ft. Covered Hopper Car.
Sheet No. 127	Toggle Lock Vacuum Pneumatic Outlet.
Drawing 86077	20" Dia. Hatch Cover Ass'y - Fiberglass

Spec. 5820 cu.ft. Covered Hopper Car

5820 CU. FT. COVERED HOPPER CAR

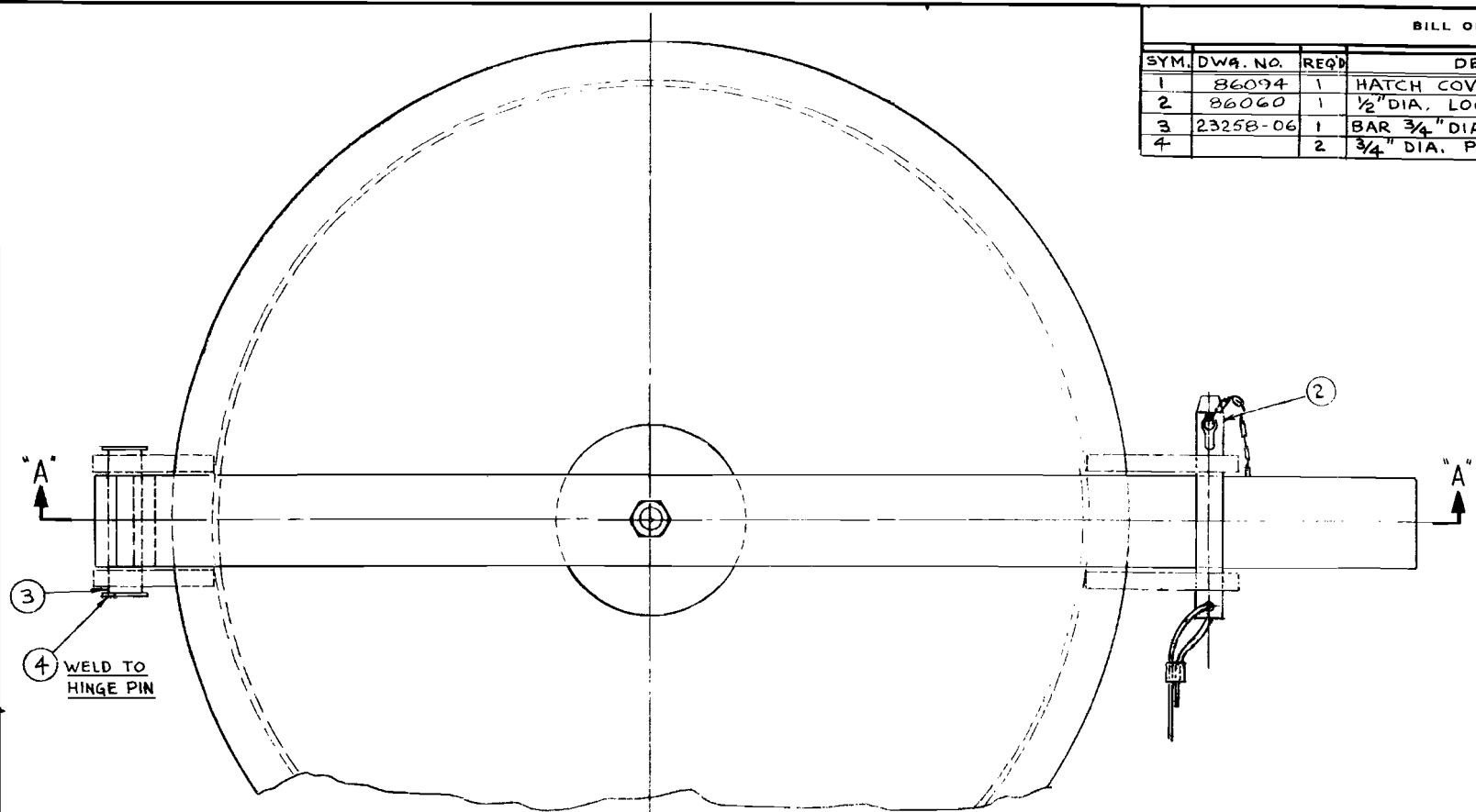




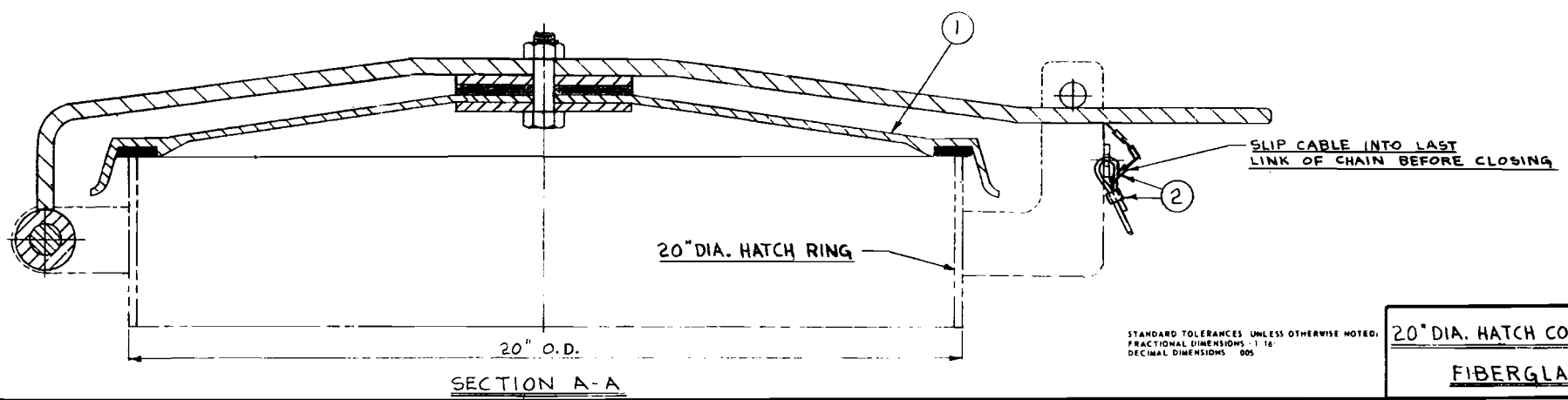
TOGGLE LOCK VACUUM PNEUMATIC OUTLET

BILL OF MATERIAL

SYM.	DWG. NO.	REQD.	DESCRIPTION	MATERIAL
1	86074	1	HATCH COVER & STRAP S/A.	FIBERGLASS
2	86060	1	1/2" DIA. LOCKING PIN S/A.	STN. STL.
3	23258-06	1	BAR 3/4" DIA. x 3 1/2" LG.	STL.
4		2	3/4" DIA. PLAIN WASHER	STL.



3
4 WELD TO HINGE PIN



SLIP CABLE INTO LAST LINK OF CHAIN BEFORE CLOSING

20" DIA. HATCH RING

20" O.D.

SECTION A-A

STANDARD TOLERANCES UNLESS OTHERWISE NOTED:
FRACTIONAL DIMENSIONS - 1/16"
DECIMAL DIMENSIONS - .005

20" DIA. HATCH COVER ASS'Y.
FIBERGLASS

86077

REDRAWN

DATE: 2-7-84 SCALE: S.K. 10-3-84 HALF 15" # 4.11 R4B